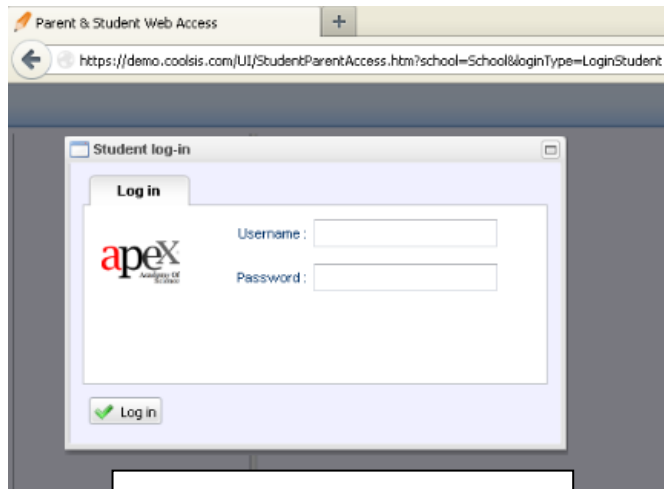
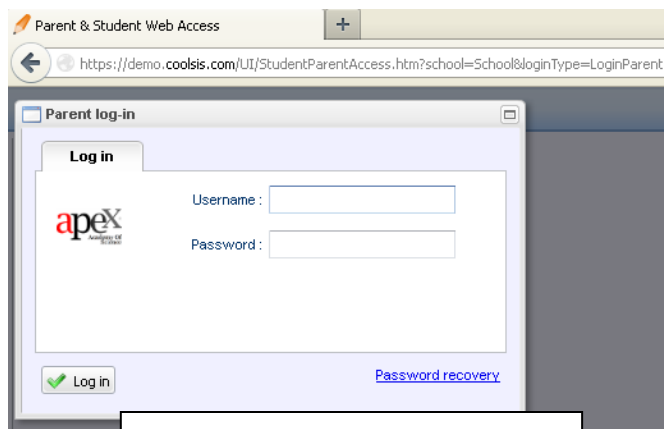


Single Log-in Page

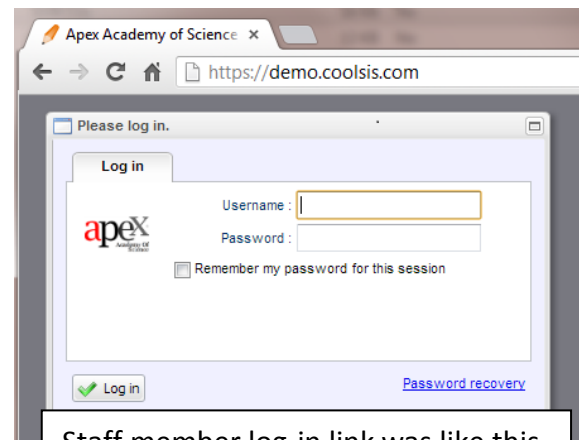


Student log-in link was like this.

Until now, there were three different log-in links for the students, parents, and staff members on CoolSIS.

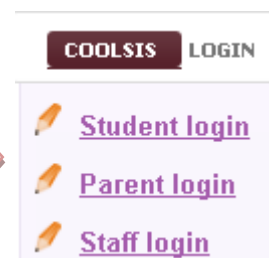


Parent log-in link was like this.

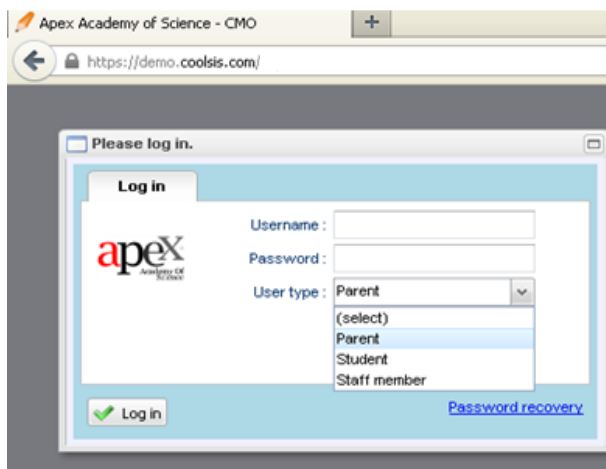


Staff member log-in link was like this.

Since there were three different links for the CoolSIS, schools had to put three different log-in links on their websites.



From now on, schools will need to put only one log-in link on their websites for the CoolSIS. All types of users will use the same link for CoolSIS. However, the webmasters of the school websites need to make the necessary changes.



With this new feature, parents will be able to see their children data in one CoolSIS account, even though if the students are attending different schools in the same school district. Please make sure to make an existing parent as district-wide user to be able to make this happen. If you need assistance on how to make an existing parent as district-wide user by using “Connect to Another Parent” feature, please click on the helpdesk button in your CoolSIS account to find the How to make an existing parent as district-wide user by using “Connect to Another Parent” feature article. It can be found under the helpdesk/Knowledge Base/Main Office.

